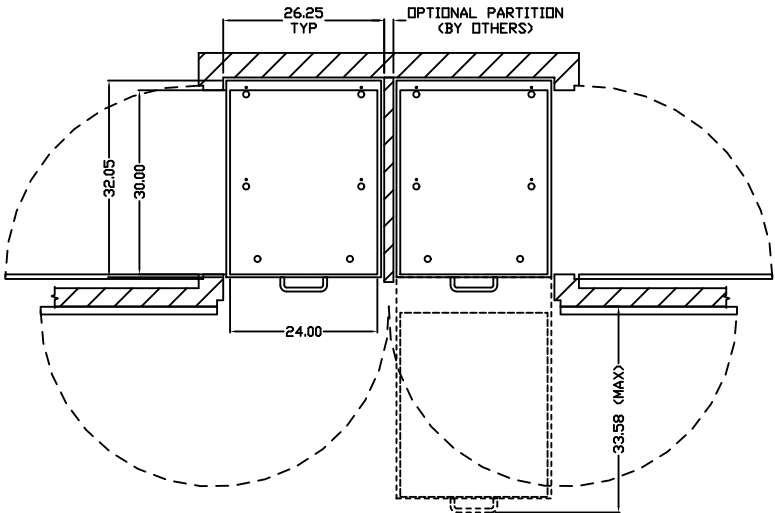


DWG NO.			SH	REV	1		
REVISIONS							
ECO NO.	ZONE	REV	DESCRIPTION			DATE	APPROVED

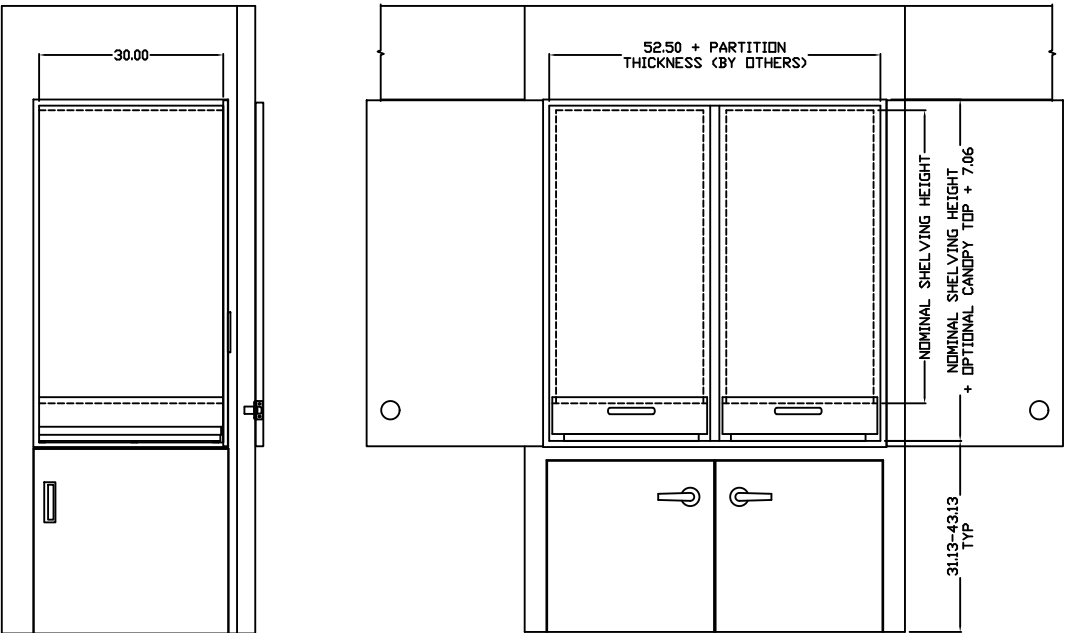
ENCLOSURE CONSTRUCTION GUIDELINES

- NOTES:
- 1.) CABINET/CLOSET AND MOUNTING SURFACE BY OTHERS.
 - 2.) LOCAL FIRE CODES MAY APPLY. THE RESPONSIBILITY TO ENSURE APPLICABLE CODES HAVE BEEN MET IS THAT OF OTHERS.
 - 3.) DOORS, WALLS, AND WALL THICKNESSES SHOWN ARE FOR ILLUSTRATIVE PURPOSES ONLY. ACTUAL DIMENSIONS TO BE FINALIZED BY OTHERS.
 - 4.) DIMENSIONS SHOWN ARE TO PROVIDE FINISHED OPENING SIZES ONLY AND INCLUDE RECOMMENDED MINIMUM CLEARANCES.
(DIMENSIONS SUBJECT TO CHANGE WITHOUT NOTICE.)



SPLIT DOUBLE
2 - 24 x 30 BASE UNIT CARRIAGES

FINISHED OPENING



ANCHORING DETAIL
SCALE 2:1

FORCES AT BOLT POINTS & FOOT POINTS

SYSTEM CONFIG	CARRIAGE WIDTH	CARRIAGE LENGTH	"WORST CASE" FORCE REQUIREMENTS				
			LEVELER 'A' SUPPORT	LEVELER 'B' SUPPORT	LEVELER 'C' SUPPORT	ANCHOR 'D' (PULL OUT)	ANCHOR 'E' (PULL OUT)
DUAL ENTRY DUAL CARR	24"	24"	400#	74#	900#	350#	650#
	24"	30"	400	74	900	350	650
	24"	36"	400	74	900	350	650

*FORCES CALCULATED PER BOLT
(SHELF WEIGHT = 150#/LENGTH-WIDTH, UNIFORMLY DISTRIBUTED)
ANCHORS TO BE Ø 5/16"-18 GRADE 5 THREADED BOLTS
DO NOT USE WOOD AS A MOUNTING SUBSTRATE TO AVOID LONG TERM INDENTING

COPYRIGHT © 19... SPACESAVER CORPORATION. ALL RIGHTS RESERVED.
This material is proprietary and confidential, and the disclosure, reproduction (by photocopy, film, blueprint, or otherwise) or incorporation into any information retrieval system without first receiving written approval from Spacesaver Corporation is expressly prohibited by law.

TOLERANCES UNLESS OTHERWISE SPECIFIED .XX±.01 .XXX±.005 X°±1°		Spacesaver FORT ATTONSON WISCONSIN	
DWN BY SRI DATE 1/26/09		TITLE CoreSTOR™ PATIENT SERVER SPLIT DOUBLE 24 X 30 GUIDE	
APVD	DATE	SIZE D FSCM NO. 58928 DWG NO. CoreSTOR SD 24x30 REV A	SCALE NTS SHEET OF